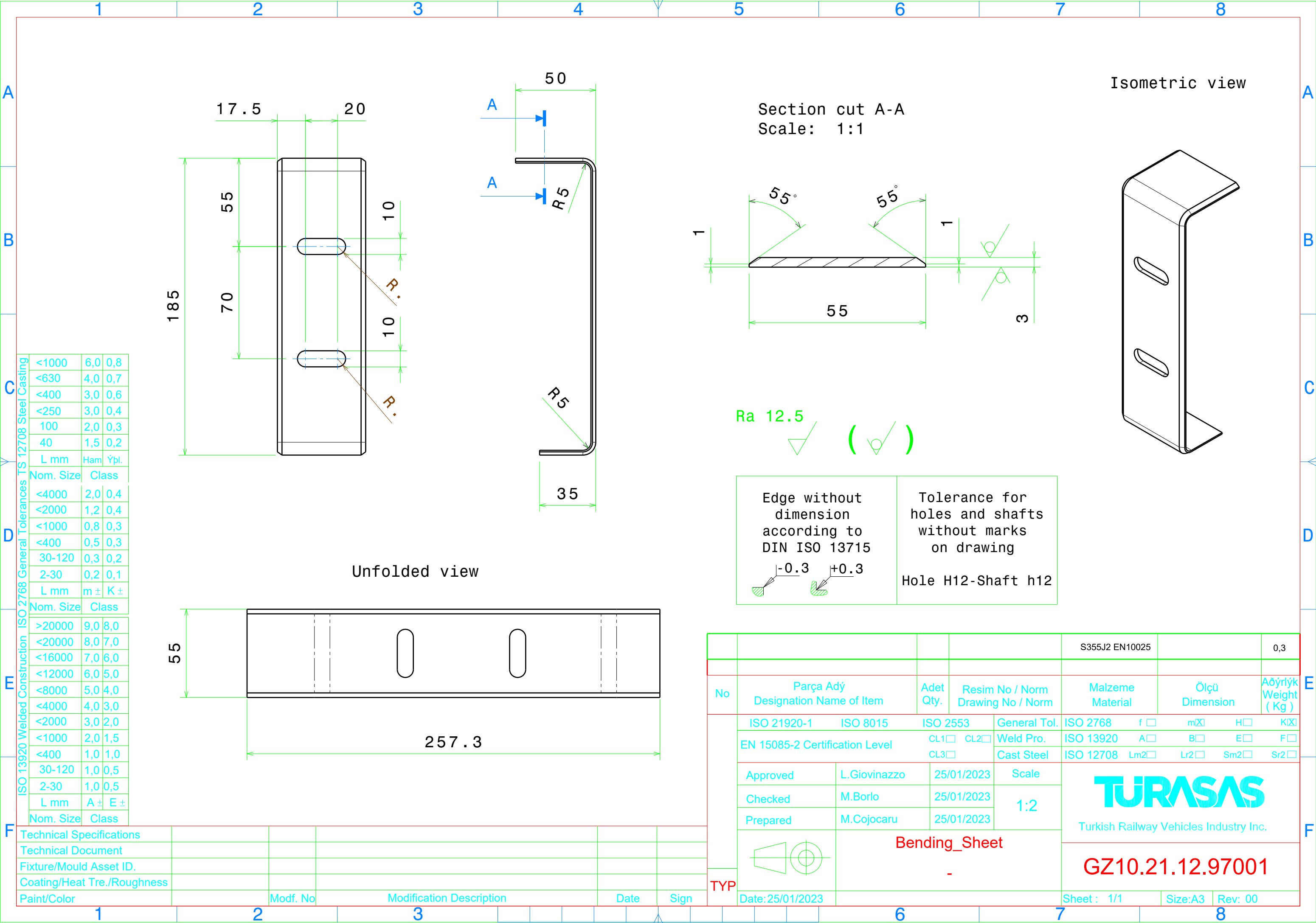


Reproduction, dissemination or use of this document or its all contents in any form without the prior written permission of TÜVASAS, is prohibited. Offenders will be liable for the payment of damages. All rights reserved in the event of the grant of a patent, utility model or ornamental design registration.



L mm

Ham

Ypl.

Nom. Size

Class

<4000

2,0

0,4

<2000

1,2

0,4

<1000

0,8

0,3

<400

0,5

0,3

30-120

0,3

0,2

2-30

0,2

0,1

L mm

m ±

K ±

Nom. Size

Class

>20000

9,0

8,0

<20000

8,0

7,0

<16000

7,0

6,0

<12000

6,0

5,0

<8000

5,0

4,0

<4000

4,0

3,0

<2000

3,0

2,0

<1000

2,0

1,5

<400

1,0

1,0

30-120

1,0

0,5

2-30

1,0

0,5

L mm

A ±

E ±

Nom. Size

Class

Technical Specifications

Technical Document

Fixture/Mould Asset ID.

Coating/Heat Tre./Roughness

Paint/Color

Modf. No

Modification Description

Date

Sign

No

Parça Adý

Designation Name of Item

Adet

Qty.

Resim No / Norm

Drawing No / Norm

Malzeme

Material

Ölçü

Dimension

Aðýrlýk

Weight (Kg)

ISO 21920-1

ISO 8015

ISO 2553

General Tol.

ISO 2768

f

m

H

K

EN 15085-2 Certification Level

CL1

CL2

Weld Pro.

ISO 13920

A

B

E

F

CL3

Cast Steel

ISO 12708

Lm2

Lr2

Sm2

Sr2

Approved

L.Giovinazzo

25/01/2023

Scale

Checked

M.Borlo

25/01/2023

1:2

Prepared

M.Cojocar

25/01/2023

1:2

Bending_Sheet

-

TYP

Date: 25/01/2023

S355J2 EN10025

0,3

TURASAS

Turkish Railway Vehicles Industry Inc.

GZ10.21.12.97001

Sheet : 1/1

Size:A3

Rev: 00